



Activity-determined Steps on the Growth of Atmospheric CO₂ Concentration Environmental Kuznets Curve (EKC) at the Country Level: Taiwan's Empirical Evidence

Wu-Jang Huang^{1*}

¹Department of Environ Eng. and Sci., National Pingtung University of Science and Technology, 91201, NeiPu, Pingtung, Taiwan.

Author's contribution

The sole author designed, analyzed, interpreted and prepared the manuscript.

Article Information

DOI: 10.9734/AJEBA/2021/v21i530381

Editor(s):

- (1) Dr. Vasilii Erokhin, Harbin Engineering University, China.
- (2) Prof. Chun-Chien Kuo, National Taipei University of Business, Taiwan.
- (3) Dr. María-Dolores Guillamón, University of Murcia, Spain.

Reviewers:

- (1) Khozema Bin Ahmed Ali, Universiti Sains Malaysia, Malaysia.
- (2) Chen-Hua Fu, National Defence University, Taiwan.

Complete Peer review History: <http://www.sdiarticle4.com/review-history/67160>

Original Research Article

Received 14 February 2021
Accepted 19 April 2021
Published 23 April 2021

ABSTRACT

Taiwan's atmospheric CO₂ concentration is half in compliance on the formation of a environmental Kuznets curve (EKC), and the major contributor of direct CO₂ emissions in Taiwan is from the power generation sector using coal and natural gas as fuel. Atmospheric CO₂ concentration has been found to have the linear increment with stepwise fluctuations every five years during the period 2001-2018. Activity-determined steps were proposed noting that there is a proportion process for the increase of CO₂ coming directly from the emission source of power plants and the source from the marginal sea sink to atmosphere sink due to memory delay-releasing. The alternative occurring events of *El Nino* and *La Nina* in the West-Pacific region exactly match the fluctuations every five years, and the difference between the monitored atmospheric CO₂ concentration with an empirical equation of calculated atmospheric CO₂ concentration from the electricity structure in a single country level is a new indicator for the occurrences of *El Nino* and *La Nina* phenomena in this region. Results also showed that the atmospheric CO₂ concentration in Taiwan for the year 2035 is predicted to be as high as 430 ppm, due to a 50% natural gas energy policy. Our study provides a

*Corresponding author: E-mail: wjhuang@mail.npust.edu.tw;

causal explanation for why atmospheric CO₂ concentration has a linear increase shape with stepwise fluctuations for a single country. Our study has also proved that the linear increment with stepwise fluctuations also exhibits a EKC pattern.

Keywords: Environmental Kuznets curve; El-Nino; la nina; sink; atmospheric CO2.

1. INTRODUCTION

The reduction of carbon emissions is important for slowing down global warming, particularly pollution from CO₂. The Environmental Kuznets curve (EKC) was proposed for the environment from the aspect of income-driven actions [1,2], (Stern, 2004) [3,4,5]. From data spanning 1985 to 2015 in Taiwan, the primary energy consumption-to-GDP ratio (called energy intensity) exhibited an EKC pattern (an inverted U-shape of primary energy consumption along with increasing GDP). In our previous study the turning point of primary energy EKC was found to be driven by an exogenous event to endogenous policy [6] and the formation mechanism of CO₂ emission amount is a perfect inverted V-shape due to the disproportion process of electric energy course [7]. Most of the literatures compared the cross countries data and formulate a mathematic equation for a long run period. Recently the author has developed an event-induced mechanism [6] to explain the formation of EKC pattern in a single country level within the

Kuznets' period, 15-25 years. And in the paper we used the detail steps on controlling the process of atmospheric CO₂ concentration. The author tried to develop a new methodology to explain why the CO₂ concentration still keep growth even we have largely reduced the emission amount of CO₂ in Taiwan [7].

2. METHODS

The direct emissions of CO₂ in Taiwan come from the power generation sector (Fig. 1 and Fig. 2). The source of raw data in these two figures were got from Taiwan Power Co. (<http://www.taipower.com.tw/tc/Chart.aspx?mid=194>). In Taiwan, atmospheric CO₂ concentration (the unit used is ppm) shows a monopoly increasing shape with stepwise fluctuations. This shape is not a classical inverted U-shape for the environmental Kuznets curve (EKC). The proposed of this paper is to develop a modelling process and the controlled steps basing on the economic and business viewpoint

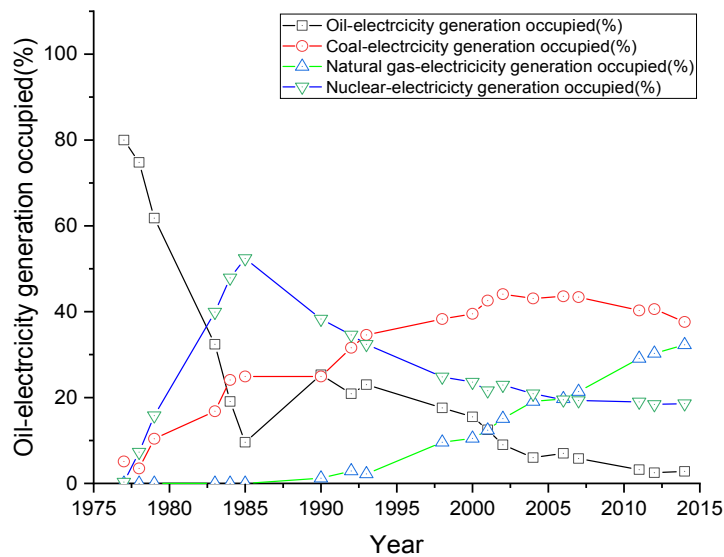


Fig. 1. Electricity generation from various primary energy sources in Taiwan from 1977 to 2014

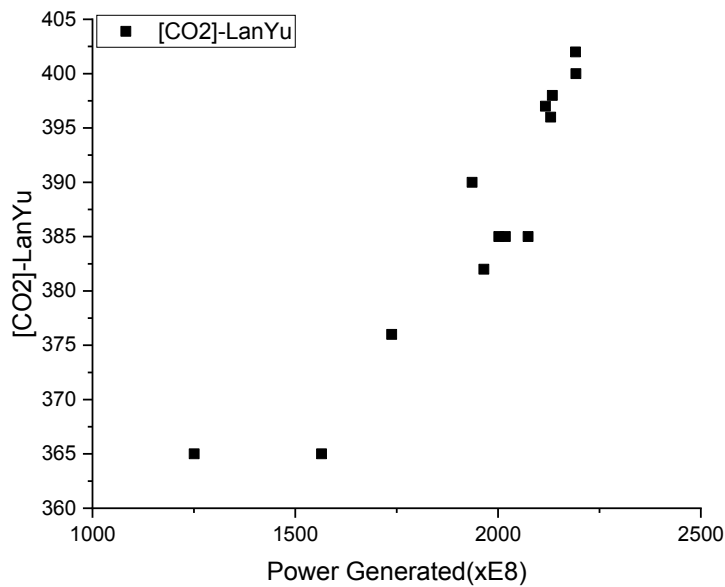


Fig. 2. Power generation and atmospheric CO₂ concentration in Taiwan from 1995 to 2015

3. RESULTS

Fig. 3 shows the EKC pattern of atmospheric CO₂ concentration in Taiwan from 1990 to 2020. For one tail hypothesis testing, we use the 1% significance level, and then $Z^* = -2.33$. Here, H_0 is observed to be 15 between 2001 to 2015, with a standard derivation of “s” years. The Kuznets infrastructural investment cycle has been estimated at 15 to 25 years, and in this paper we choose 15 years (x), and the observed average value is 17 years (H_0). If H_0 is not rejected, then the Z value must be larger than Z^* . The calculated value of s is < 3.65 years. From Fig. 3, the observed value of s is near 2.0 years, or just meeting the calculated value. Therefore, the CO₂ emission data span between 2001-2018, and the duration meets the EKC time scale. This period also matches the quick increment of natural gas’ occupied percentage in Fig. 1.

This paper analyzed the energy activity of fuel used in past years and found that among total generation electricity amount (Fig. 2), the summarized percentage of coal and natural gas used is the key factor for CO₂ emissions and that natural gas is the most significant contributor of atmospheric CO₂ concentration (Fig. 4 and Fig. 5). Since 2006, the summarized percentage of coal and natural gas used has been kept at 70%,

and therefore the CO₂ emission amount is the same [7], but the atmospheric CO₂ concentration has a linear increment with stepwise fluctuations (Fig. 3). This phenomenon quite fits the observation in the Asia region [8]. In their work, the CO₂ concentrations of China, India, Japan, South Asia, and East Asia were compared for 1950-2015. The CO₂ concentrations have a similar changing trend and possess a plateau area at 1995-2000, 1977-1982, and 1960-1965. In Fig. 3, due to the appearance of stepwise fluctuations, we find base-line matched points between 2001 and 2018. It means that the linear increment with stepwise fluctuations still illustrates a EKC pattern.

4. DISCUSSION

Fig. 6 shows the slopes of the natural gas used percentage as power fuel, indicated by S1, S2, and S3. The growth rate of CO₂ concentration at each corresponding step does not match with S1, S2, and S3, but shows a delayed response for 5 years later. We propose a CO₂ concentration accumulation and consumption in Scheme 1 and Scheme 2, where the direct emissions from power plants and sea sink releasing are the two major sources. 4. The descriptions of proportional process and dis-proportional process has been defined firstly for energy

sources in our previous publication as following:” We just proposed those two processes as the meaning of “proportion” and “disproportion”. The “proportion process” is occurred A to (B and C), the new generation energy system totally replaces the existed energy system; while “disproportion process” is occurred (B and C) to A, the different energy system co-exist at same time.” And in here we extend the original idea to the cycling of emitted CO₂ from power plants, the different two interaction models between sources and sinks of CO₂. The proportional process means the same CO₂ sink accept various CO₂ sources. While the disproportional process means the reversible migration between CO₂ sinks and sources.

If each CO₂ source has a clear cut, then the CO₂ concentration will have an inverted V-shape due to the disproportion process as shown in Scheme 1 [7], and a linear increment with stepwise fluctuations can be observed and attributed to the sea-air interaction in the marginal sea [9,10]. The panel data used here are detected at Lan-Yu Air Quality Detection Center. The site is just in the biggest marginal sea, the *South Sea*. In

addition, the atmospheric CO₂ concentration has a regular change every 5 years and also matches the alternative occurrences of *El Nino* and *La Nina* phenomena (Fig. 7). The 5-year shifted atmospheric CO₂ concentration can be calculated by the following Eq. [1]. From this empirical equation, we can make sure that the use of natural gas as power plants’ fuel has a higher contribution to atmosphere CO₂ concentration than the contributions from coal power plants. 8. The empirical fitting equation tells the pre-factor of natural gas is larger than coal, therefore we can conclude this viewpoint. In addition, besides energy activity (the 2nd and 3rd terms), we obtain two other activities - they are contributed from human lives’ related activity (the 1st term) and nature activity (the 4th term). 4. The “activity” means the contributions of CO₂ from power plants and the natural *El Nino* and *La Nina* phenomena. The “activity-determined steps” means the CO₂ concentration is determined by those two activities.

$$[CO_2] = 280 + 1.85 * Natural\ Gas\% + \frac{1.2 * Coal\%}{Natural\ Gas\%} + 1.0 * Coal\% + 28 \quad Eq. [1]$$

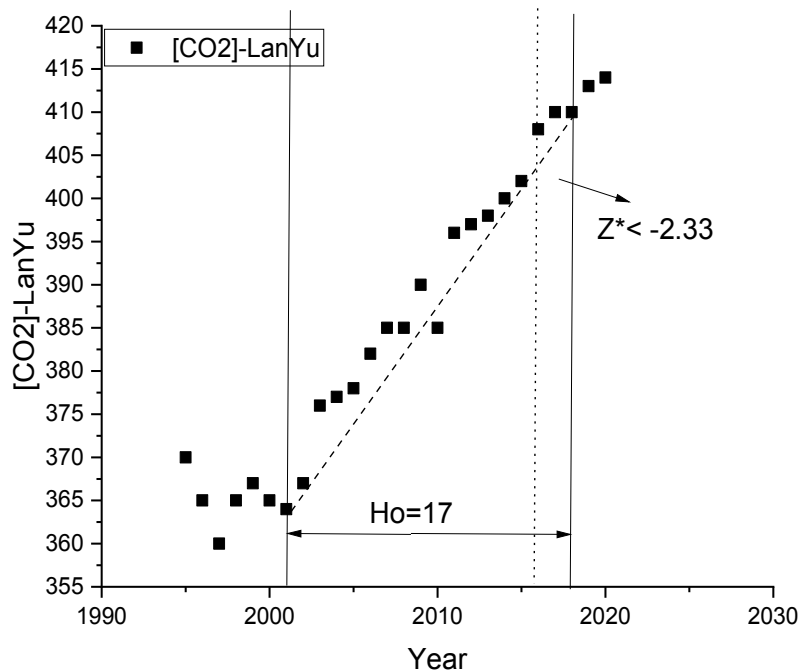


Fig. 3. Atmospheric CO₂ concentration in Taiwan from 1995 to 2020

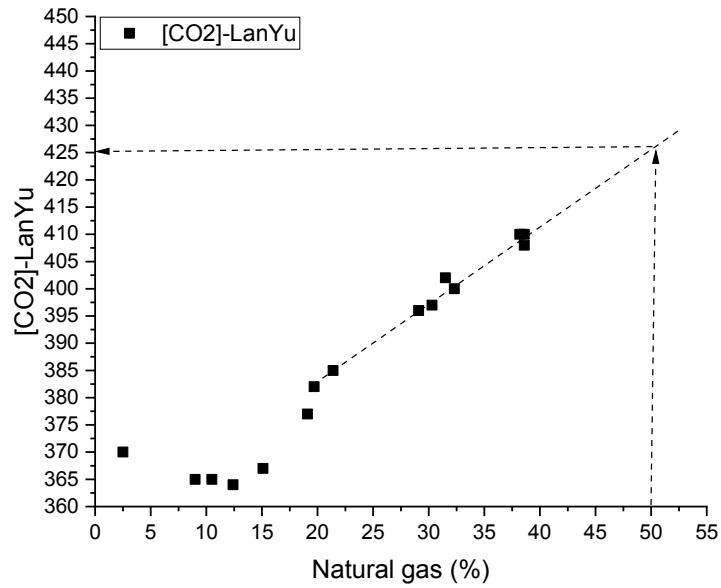


Fig. 4. Natural gas used percentage and atmospheric CO₂ concentration in Taiwan from 1995 to 2020

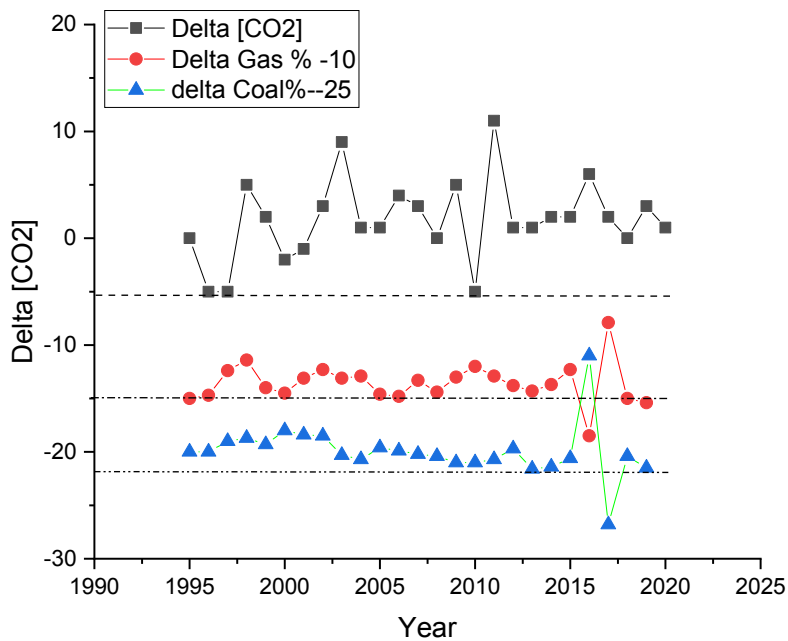


Fig. 5. Comparison of the growth slope between the percentage of natural gas used and atmospheric CO₂ concentration in Taiwan from 1995 to 2020

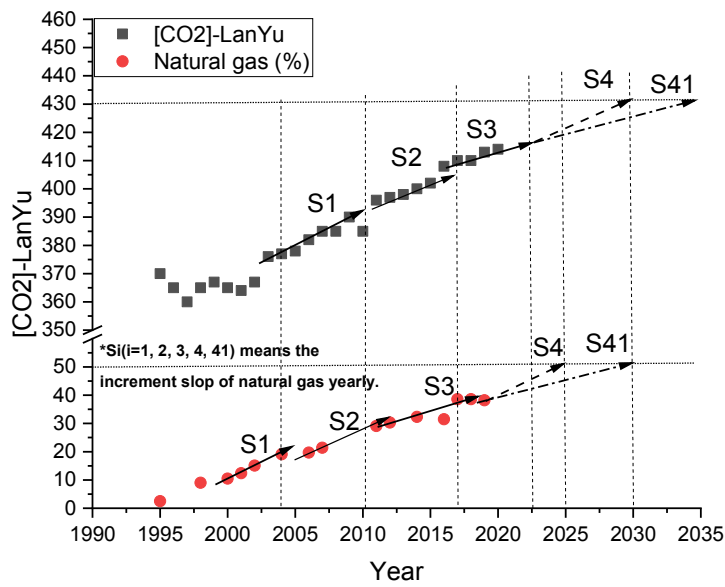


Fig. 6. Comparison of the growth slope between the percentage of natural gas used and atmospheric CO₂ concentration in Taiwan from 1995 to 2020

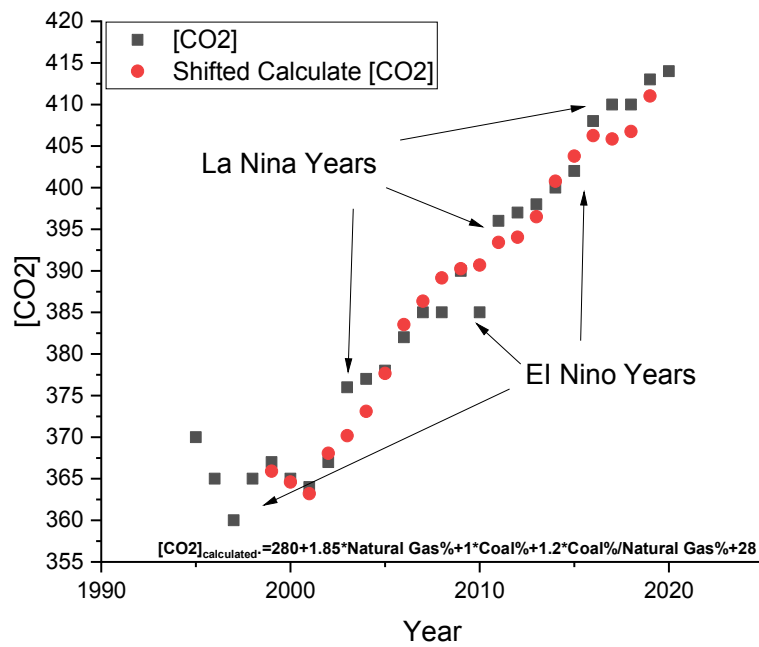
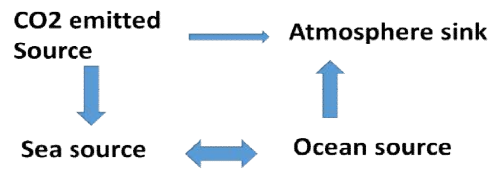
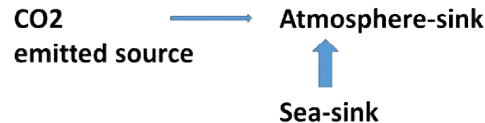


Fig. 7. Relations between stepwise plateau region and *El Nino* and *La Nina* years' atmospheric CO₂ concentration in Taiwan from 1995 to 2020



Scheme 1. The proposed disproportionation process of CO₂ emissions and sinking and sourcing of the sea



Scheme 2. The proposed proportion process of direct CO₂ emissions and delay memory-releasing from sea-sink

5. CONCLUSION REMARKS AND POLICY IMPLICATIONS

Many countries have chosen the strategy for a large decrease of CO₂ emission amount by changing the fuel of fire power plants from coal to natural gas, however, the world still has higher atmospheric CO₂ concentration. Our study provides a causal explanation for why atmospheric CO₂ concentration has a linear increment with stepwise fluctuations at the single country. Our study further approves that the linear increment with stepwise fluctuations also exhibits a EKC pattern. When the natural gas percentage reaches 50%, the CO₂ concentration level in Taiwan will increase up to 425 ppm (Fig. 4), which is the proposed energy structure for the year 2025 by the Taiwan government. It indicates that a one-unit increase of natural gas used will increase atmospheric CO₂ concentration by 35ppm. For Taiwan, the maximum atmospheric CO₂ concentration will be 430 ppm after considering the effect of delay releasing from sea sink to atmosphere sink (Fig. 6). The rate of archiving the electric structure goal is independent of the final atmospheric CO₂ concentration. It means that the energy policy and natural phenomena decide the atmospheric CO₂ concentration. Because Taiwan's information and communication technologies (ICT) industry will play a key role in developing artificial intelligence (AI), internet of things (IoT), and 5th generation mobile network/wireless system (5G) applications for the world in the coming 15-25 years, the country need more electric power. Therefore, without the consideration of using renewable energy, Taiwan

can keep the choice of consuming ocean and atmosphere sinks for developing its economy.

COMPETING INTERESTS

Author has declared that no competing interests exist.

REFERENCES

1. Kuznets S. Economic growth and income inequality. *American Economic Review*. 1955;45:1- 28.
2. Grossman GM, Krueger AB. Environmental impacts of a North American free trade agreement. National Bureau of Economic Research, Working paper No. 1991;3914.
3. Egli H, Steger TM. A dynamic model for the environmental Kuznets curve: Turning point and public policy. *Environmental & Resource Economics*. 2007;36:15-34.
4. Yu Y, Chen L. Research progress of the environmental Kuznets Curve (EKC) in China. *Ecology and Environmental Sciences*. 2012;21:2018-2023.
5. Kong Y, Khan R. To examine environmental pollution by economic growth and their impact in an environmental Kuznets curve (EKC) among developed and developing countries., *PLOS ONE*, 2019;14 e0209532:1-23.
6. Wu-Jang Huang. Driving force of environmental Kuznets curve (EKC) pattern on energy Intensity in Taiwan at 1995-2015: Empirical evidence of

- exogenous event transformed to endogenous policies effect. Review of Integrative Business and Economics Research. 2020;9:333-339.
7. Wu-Jang Huang. Formation mechanism of the perfect inverted V-Shape CO2 emission amount environmental Kuznets curve (EKC) the country level: Taking Taiwan as an Example. Journal of Economics, Management and Trade. 2021;27:1-6.
 8. Kurokawa J, Ohara T. Long-term historical trends in air pollutant emissions in Asia: Regional Emission inventory in ASia (REAS) version 3.1. Atmos. Chem. Phys., 2020;20:12761–12793.
 9. Chen CTA. The role of the Pacific ocean as a regulator of atmospheric carbon dioxide concentrations, Direct Ocean Disposal of Carbon Dioxide, Edited by Honda N, Ohsumi T. Terra Publishing Company. 1995:23-34.
 10. Chen CTA, Bai Y, Huang TH, He X, Chen HW, Yu S. Southward spreading of the Changjiang Diluted Water in the La Niña spring of 2008, Scientific Report. 2021;11:1-11.

© 2021 Huang; This is an Open Access article distributed under the terms of the Creative Commons Attribution License (<http://creativecommons.org/licenses/by/4.0>), which permits unrestricted use, distribution, and reproduction in any medium, provided the original work is properly cited.

Peer-review history:
The peer review history for this paper can be accessed here:
<http://www.sdiarticle4.com/review-history/67160>