



# Phylogenetic Relationships and Diversity in *Leymus* (Poaceae, Triticeae) Based on Simple Sequence Repeats Markers

Xin-yi Zhang <sup>a</sup>, Ying-xia Lei <sup>a\*</sup> and Rui-wu Yang <sup>b</sup>

<sup>a</sup> Institute of Qinghai-Tibetan Plateau, Southwest Minzu University, Chengdu 610041, Sichuan, China.

<sup>b</sup> College of Life Science, Sichuan Agricultural University, Ya'an 625014, Sichuan, China.

## Authors' contributions

This work was carried out in collaboration among all authors. All authors read and approved the final manuscript.

## Article Information

DOI: 10.9734/AJOB/2023/v18i3343

## Open Peer Review History:

This journal follows the Advanced Open Peer Review policy. Identity of the Reviewers, Editor(s) and additional Reviewers, peer review comments, different versions of the manuscript, comments of the editors, etc are available here: <https://www.sdiarticle5.com/review-history/99196>

Original Research Article

Received: 07/03/2023

Accepted: 09/05/2023

Published: 16/05/2023

## ABSTRACT

**Aims:** The objective of the study was to investigate: (1) the Ns genome donor and elucidate the origins of the Xm genome of *Leymus*; (2) evaluate the phylogenetic relationships among these species.

**Methodology:** The CTAB (cetyltrimethylammonium bromide) procedure was used to extract total genomic DNA from fresh leaf tissue. A total of 150 pairs of SSR primers were tested to screen those produced polymorphic DNA bands to continue further analysis with *Elymus* species and 13 diploid perennial species as templates. The GS was used to construct a dendrogram via the unweighted pair group method with arithmetic average (UPGMA) and the SHAN (sequential, hierarchical, agglomerative, and nested clustering) routine in the NTSYS-pc program.

**Results:** The primers WMC475, WMC11 and QWM213 showed more expansion efficiency in the research. There were significant diversity and polymorphism between *Leymus* and related diploid

\*Corresponding author: E-mail: leiyingxia@hotmail.com;

*Triticeae* species based on SSR makers. The largest GS coefficient values between *Pse. stipifolia* and *Elymus hystrix* indicates that the genetic distance is the closest and has a closer genetic relationship. In clade I, the *Leymus* species formed a very well-supported into a small distinct group (Ia) first. Specifically, *L. racemosus*, *L. salinus*, *L. secalinus* and *L. triticooides* were clustered closely. **Conclusion:** *Psathyrostachys juncea*, *Psa. huanshanica* and *Psa. fragilis* (Ns genome) clustered together into clade I with *Leymus* species, which further illustrates *Leymus* that contains Ns genome is more closely related to *Psathyrostachys*. *St genome and J genome did not participate in the origin of Leymus*, and the genetic relationship and genetic distance of *Leymus* species are related to geographical distribution and environment.

**Keywords:** *Leymus*; SSR; phylogenetic relationships; phylogenetic analysis.

## 1. INTRODUCTION

"*Leymus* Hochst. is an important polyploid perennial genus of *Triticeae*" [1]. "It includes approximately 30 species and 19 subspecies" [2]. "All the species in *Leymus* are polyploid with chromosome numbers ranging including tetraploid ( $2n=4x=28$ ), hexaploid ( $2n=6x=42$ ), octoploid ( $2n=8x=56$ ), decaploid ( $2n=10x=70$ ), and dodecaploid ( $2n=12x=84$ )" [3-7]. "They are distributed in a wide range of ecological habitats regions which from the coastal areas of the North Sea, Central Asia, and East Asia, extending to Alaska and the western areas of North America" [3,4,6,7]. "They are found particularly large in numbers on the mountains of Central Asia and North America" [4,8]. There are many *Leymus* species in China and it includes about 27 species, 3 subspecies, and 3 varieties, which are mainly distributed in north-western, north, north-eastern and south-western regions in China [9]. "Most species of *Leymus* are desirable traits as disease and insect resistance, bigger spikes, more and bigger grains and efficient photosynthesis" [4]. "They are growing in saline or alkaline lands, and dry or semi-dry areas and are highly adaptable to coldness, dryness and saline or alkaline lands" [10]. "Thus, some species of *Leymus* are the main components of grasslands and fine varieties of herbage. *Leymus* is an important genetic resource for the improvement of *Triticeae* cereal crops" [4,7,9,11].

"The genus *Leymus* was erected and circumscribed by Hochstetter (1848) with *L. arenarius* (L.) Hochst" [1]. "as its model specie. *Leymus* was recognized to be a genus with the Ns and Xm genomes. The presence of the *Psathyrostachys* Ns genome in *Leymus* has been identified on the basis of meiotic pairing in interspecific hybrids and DNA sequences" [12]. "However, which species of *Psathyrostachys*

potentially served as the genome donor of the Ns genome in *Leymus* has been identified. The Xm genome is one of the important basic genomes in the perennial *Triticeae* species" [13,14]. "However, the origin of the Xm genome is still unknown. In addition, the origin and definition of the genus, precise taxonomic ranks and relationships among the species in the genus have been under discussion" [5,6,8,15-20]. The study on the genetic diversity of *Leymus* would provide the theoretical foundation for using this genus plants to breed *Triticeae* crops and herbage.

"Molecular marker is an effective and valuable technique to diagnose the internal gene arrangement and plant systematic to establish evolutionary relationships within or among species, subspecies, populations, and genomes by directly analyzing the polymorphism of the genetic material" [10,21,22]. "SSR (single sequence repeats) markers were used to carry out a relationship analysis of diploid perennial species in the *Triticeae*" [23,24]. In the present study, we carried out phylogenetic relationships using single sequence repeats for 12 *Leymus* taxa, one *Elymus* species, and 13 diploid perennial species representing 7 basic genomes in *Triticeae*. The aims of this study were to investigate: (1) the Ns genome donor and elucidate the origins of the Xm genome of *Leymus*; (2) evaluate the phylogenetic relationships among these species.

## 2. MATERIALS AND METHODS

### 2.1 Plant Materials

A total of 26 accessions of *Triticeae* were used in this study, including 12 accessions of *Leymus* (NsXm) and 14 relative genera taxa which contained 4 accessions of *Pseudoroegneria* (St), 3 accessions of *Psathyrostachys* (Ns), 2

accessions of *Agropyron* (P), 2 accessions of *Hordeum* (H), *Australopyrum retrofractum* (W), *Lophopyrum elongatum* (E<sup>e</sup>) and *Elymus hystrix* (StH) (Table 1). The seed materials of Triticeae taxa with PI numbers were kindly provided by American National Plant Germplasm System (Pullmam, WA, USA); those with Y and ZY numbers were collected by the Triticeae Research Institute of Sichuan Agriculture University. The plants and voucher specimens are deposited at Triticeae Research Institute, Sichuan Agricultural University, China (SAUTI).

## 2.2 Experimental Method

The CTAB (cetyltrimethylammonium bromide) procedure was used to extract total genomic DNA from fresh leaf tissue [25]. A total of 150 pairs of SSR primers were tested to screen those that produced polymorphic DNA bands to continue further analysis with *Elymus* species and 13 diploid perennial species as templates. All polymerase chain reactions (PCRs) were undertaken in a 50- $\mu$ L reaction volume, containing 1  $\mu$ L template DNA at the concentration of 20 ng/ $\mu$ L, 1.5 mmol/L MgCl<sub>2</sub>, 200 mol/L dNTPs, 1.0 mol/L of each primer, and 1.5 U ExTaq Polymerase (TaKaRa) and distilled

deionized water to the final volume. The PCR reaction was as follows: one cycle of 4 min at 94°C, 35 cycles of 30 sec at 94°C, 30 sec at 52°C, 1 min at 72°C, and ended with a final extension of 10 min at 72°C. Each sample was diluted 1:10 prior to injection. Finally, the PCR results were visualized by capillary electrophoresis using Qiaxcel (QIAxcel Advanced Electrophoresis System, Qiagen) and analyzed by using 35 to 1000 bp DNA size alignment marker. Then, we screened the results of genotyping for specificity on those DNA samples, and select the best-performing for the analysis of the collection.

## 2.3 Data Analysis

"The SSR bands were treated as dominant markers, individual band was considered as a character and were scored as present (1) or absent (0) of the same size for each primer, then entered into a binary matrix representing the SSR profile of each accession. The potential of SSR markers for estimating genetic variability was examined by measuring the marker informativeness of polymorphic loci. The loci were counted as the number of total amplified bands (TB), number of polymorphic bands (PB)

**Table 1. The materials investigated in this present study**

No.	Species	2n	Genomo	Accession	Origin
1	<i>Leymus angustus</i>	84	NsXm	PI 271893	Kazakhstan
2	<i>L. arenarius</i>	28	NsXm	PI 272126	Kazakhstan
3	<i>L. chinensis</i>	28	NsXm	PI 499515	Inner Mongolia, China
4	<i>L. karelinii</i>	84	NsXm	PI 598529	Xinjiang, China
5	<i>L. multicaulis</i>	28	NsXm	PI 440324	Kazakhstan
6	<i>L. paboanus</i>	56	NsXm	PI 531808	Estonia
7	<i>L. pseudoracemosus</i>	28	NsXm	PI 531810	Qinghai, China
8	<i>L. racemosus</i>	56	NsXm	PI 598806	Russia
9	<i>L. salinus</i>	28	NsXm	PI 636574	United States
10	<i>L. secalinus</i>	28	NsXm	Y040	Xinjiang, China
11	<i>L. tianshanicus</i>	84	NsXm	Y2036	Xinjiang, China
12	<i>L. triticoides</i>	28	NsXm	PI 531821	United States
13	<i>Pseudoroegneria strigosa</i>	14	St	PI 531752	Estonia
14	<i>Pse. libanotica</i>	14	St	PI 228390	Iran
15	<i>Pse. stipifolia</i>	14	St	PI 313960	Russia
16	<i>Pse. spicata</i>	14	St	PI 232123	United States
17	<i>Hordeum bogdanii</i>	14	H	Y1488	Xinjiang, China
18	<i>H. chilense</i>	14	H	PI 531781	Argentina
19	<i>Psathyrostachys juncea</i>	14	Ns	PI 430871	Russia
20	<i>Psa. huanshanica</i>	14	Ns	ZY3157	Shanxi, China
21	<i>Psa. fragilis</i>	14	Ns	PI 347191	Iran
22	<i>Agropyron critatum</i>	14	P	PI 277352	Russia
23	<i>Ag. mongolicum</i>	14	P	PI 511543	Mongolia
24	<i>Australopyrum retrofractum</i>	14	W	PI 531553	Argentina
25	<i>Lophyrum elongatum</i>	14	E <sup>e</sup>	PI 574517	Argentina
26	<i>Elymus hystrix</i>	28	StH	PI 531616	Canada

and % of polymorphic bands (PPB). The data matrix was entered into the NTSYS-pc program” [26]. “Genetic similarities (GS) among the 26 germplasm materials were calculated based on Jaccard’s coefficient using the Simqual (similarity for qualitative data) method. The GS was used to construct a dendrogram via the unweighted pair group method with arithmetic average (UPGMA) and the SHAN (sequential, hierarchical, agglomerative, and nested clustering) routine in the NTSYS-pc program” [26].

### 3. RESULTS

A total of 150 pairs of primers were tested, and 23 pairs of primers were able to produce clear and stable amplified bands for the best-performing for the analysis of the collection (Table 2). The 23 pairs of primers used were amplified to obtain 438 bands with different mobility, of which 430 bands were polymorphic, accounting for 98.18%. The 11-29 bands were amplified for each pair of primers, and 19.04 bands were amplified on average for each pair of

primers. Among them, the primers WMC475, WMC11 and QWM213 showed more expansion efficiency in our research. Fig. 1 shows the PCR amplification results of primers WMC475 on 26 test materials. The results showed that there were significant diversity and polymorphism between *Leymus* and related diploid Triticeae species based on SSR makers.

All the 438 SSR bands were used to calculate the Jaccard’s genetic similarity coefficient (GS) multivariate analysis using the NTSYS-pc (Table 3). The genetic similarity coefficients ranged from 0.545-0.966, with an average of 0.723. The largest GS coefficient values (0.966) were between *Pse. stipifolia* and *Elymus hystrix* indicates that the genetic distance is the closest and has a closer genetic relationship. *L. triticoides* and *Psathyrostachys juncea* have the smallest GS coefficient values (0.545), indicating that their genetic relationship is far away. The GS values of *L. triticoides* and *Psa. huanshanica* also had the smallest GS coefficient values (0.545).

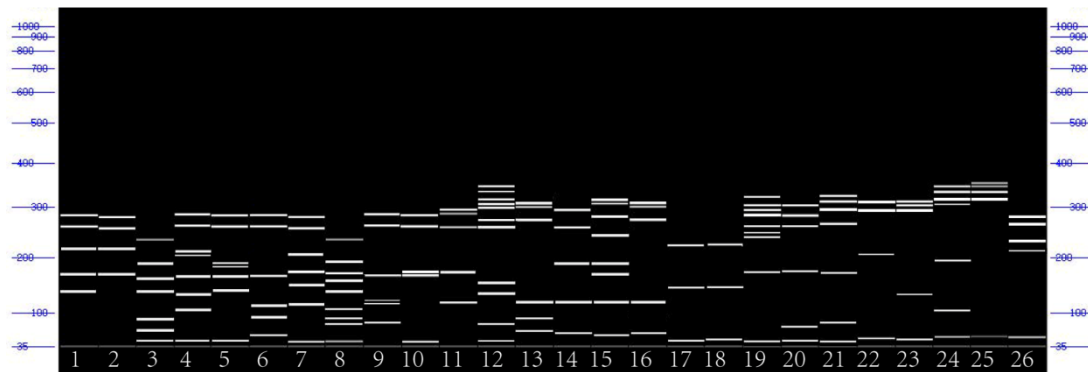


Fig. 1. The SSR polymorphism generated by primer WMC475 (The material order was the same as in Table 1, and analyzed by using 35 to 1000 bp DNA size alignment marker)

Table 2. List of primers, their sequences and amplification results

Primer		Sequence 5'-3'	TB	PB	PPB%
GWM257	F	AGAGTGCATGGTGGGACG	25	25	100
	R	CCAAGACGATGCTGAAGTCA			
GWM247	F	GCAATCTTTTTTCTGACCACG	21	21	100
	R	ATGTGCATGTCGGACGC			
GWM304	F	AGGAAACAGAAATATCGCGG	16	16	100
	R	AGGACTGTGGGAATGAATG			
GWM410	F	GCTTGAGACCGGCACAGT	24	22	91
	R	CGAGACCTTGAGGGTCTAGA			
GWM617	F	GATCTTGGCGCTGAGAGAGA	17	16	94
	R	CTCCGATGGATTACTCGCAC			
WMC111	F	ATTGATGTGTACGATGTGCCTG	27	27	100
	R	CATGTCAATGTCATGATGAAGC			
WMC41	F	TCCCTCTTCCAAGCGCGGATAG	19	19	100

Primer		Sequence 5'-3'	TB	PB	PPB%
WMC611	R	GGAGGAAGATCTCCCGGAGCAG	16	16	100
	F	GGTTCGCTTTCAAGGTCCACTC			
GWM146	R	CGGGACACTAGTGCTCGATTCT	12	12	100
	F	CCAAAAAACTGCCTGCATG			
GWM162	R	CTCTGGCATTGCTCCTTGG	14	14	100
	F	AGTGGATCGACAAGGCTCTG			
GWM182	R	AGAAGAAGCAAAGCCTTCCC	13	11	84
	F	TGATGTAGTGAGCCCATAGGC			
GWM153	R	TTGCACACAGCCAAATAAGG	11	11	100
	F	GATCTCGTCACCCGGAATTC			
GWM458	R	TGGTAGAGAAGGACGGAGAG	15	15	100
	F	TGCCTGGCTCGTTCTATCTC			
GWM213	R	CTAGCTTAGCACTGTCGCC	26	26	100
	F	CTAATTGCAACAGGTCATGGG			
GWM359	R	TACTTGTGTTCTGGGACAATGG	23	22	95
	F	AATGGCAATTGGAAGACATAGC			
GWM577	R	TTCGCAATGTTGATTTGGC	18	18	100
	F	ATGGCATAATTTGGTGAAATTG			
WMC475	R	TGTTTCAAGCCCAACTTCTATT	29	29	100
	F	AACACATTTTCTGTCTTTTCGCC			
GDM29	R	TGTAGTTATGCCAACCTTTCC	11	11	100
	F	CTAGTTGTGCTAGGCGCTCC			
GDM77	R	CTGGCTGCTCCCTCCTC	25	25	100
	F	GACACACAATAGCCAAAGCA			
GDM8	R	TGATGTCGGCACTATTTTGG	14	11	78
	F	TTCTCCAACGCACGTTAGC			
WMC10	R	CCCAAATGATGGCAGCTACT	10	10	100
	F	GATCCGTTCTGAGGTGAGTT			
WMC128	R	GGCAGCACCTCTATTGTCTC	28	28	100
	F	CGGACAGCTACTGCTCTCCTTA			
WMC349	R	CTGTTGCTTGCTCTGCACCCTT	24	24	100
	F	ACACACACTCGATCGCAC			
Total	R	GCAGTTGATCATCAAAACACA	438	430	98

TB: Number of total amplified bands; PB: Number of polymorphic bands; PPB%: % of polymorphic bands

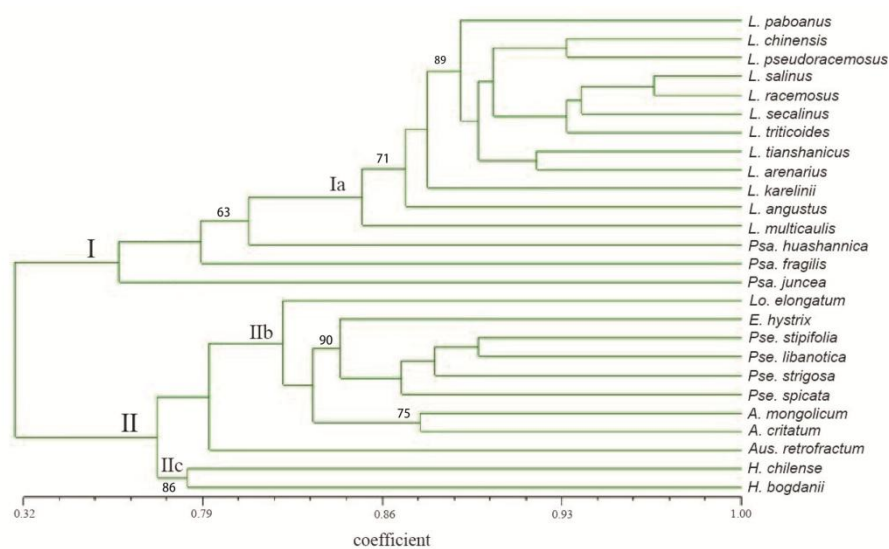


Fig. 2. A dendrogram generated by using Jaccard's coefficients of similarity for the SSR

Table 3. Genetic similarities for the SSR makers

	1	2	3	4	5	6	7	8	9	10	11	12	13	14	15	16	17	18	19	20	21	22	23	24	25	26
1	1																									
2	0.864	1																								
3	0.864	0.864	1																							
4	0.761	0.864	0.864	1																						
5	0.795	0.761	0.761	0.761	1																					
6	0.841	0.795	0.897	0.898	0.875	1																				
7	0.875	0.84	0.807	0.801	0.841	0.861	1																			
8	0.773	0.761	0.76	0.716	0.795	0.75	0.75	1																		
9	0.715	0.807	0.795	0.886	0.750	0.83	0.852	0.807	1																	
10	0.818	0.716	0.739	0.795	0.818	0.795	0.852	0.761	0.784	1																
11	0.739	0.829	0.773	0.750	0.807	0.830	0.784	0.795	0.773	0.75	1															
12	0.761	0.773	0.795	0.761	0.807	0.795	0.841	0.727	0.830	0.830	0.852	1														
13	0.739	0.739	0.761	0.614	0.727	0.750	0.716	0.761	0.66	0.705	0.602	0.750	1													
14	0.761	0.785	0.659	0.773	0.773	0.739	0.784	0.740	0.750	0.648	0.733	0.909	0.886	1												
15	0.795	0.719	0.741	0.693	0.707	0.707	0.773	0.773	0.739	0.761	0.682	0.807	0.920	0.943	1											
16	0.75	0.773	0.795	0.648	0.761	0.761	0.727	0.773	0.693	0.761	0.636	0.761	0.875	0.920	0.932	1										
17	0.773	0.795	0.818	0.670	0.784	0.784	0.75	0.625	0.716	0.739	0.659	0.784	0.920	0.920	0.955	0.909	1									
18	0.670	0.693	0.716	0.568	0.683	0.704	0.648	0.693	0.614	0.682	0.579	0.682	0.841	0.864	0.853	0.895	0.852	1								
19	0.66	0.682	0.727	0.556	0.670	0.670	0.639	0.682	0.625	0.761	0.545	0.670	0.784	0.807	0.841	0.898	0.818	0.784	1							
20	0.682	0.682	0.704	0.602	0.648	0.670	0.659	0.727	0.602	0.670	0.545	0.693	0.807	0.807	0.818	0.898	0.795	0.739	0.773	1						
21	0.739	0.761	0.614	0.727	0.75	0.716	0.739	0.603	0.705	0.602	0.750	0.864	0.864	0.886	0.898	0.875	0.875	0.818	0.785	0.807	1					
22	0.716	0.738	0.761	0.613	0.727	0.727	0.693	0.739	0.659	0.727	0.609	0.727	0.886	0.909	0.92	0.841	0.875	0.841	0.784	0.761	0.864	1				
23	0.716	0.716	0.739	0.591	0.704	0.727	0.693	0.739	0.639	0.704	0.58	0.727	0.886	0.875	0.875	0.773	0.852	0.864	0.807	0.807	0.864	0.886	1			
24	0.784	0.807	0.807	0.682	0.795	0.795	0.761	0.784	0.727	0.727	0.695	0.795	0.864	0.866	0.898	0.852	0.92	0.864	0.807	0.784	0.864	0.886	0.841	1		
25	0.807	0.83	0.807	0.727	0.818	0.773	0.784	0.807	0.75	0.727	0.716	0.841	0.874	0.807	0.943	0.92	0.92	0.841	0.807	0.807	0.864	0.864	0.841	0.932	1	
26	0.761	0.739	0.761	0.614	0.727	0.727	0.693	0.761	0.659	0.727	0.602	0.727	0.909	0.932	0.966	0.92	0.92	0.864	0.83	0.784	0.887	0.864	0.886	0.864	0.864	1

In the SSR maker phylogenetic dendrogram, 26 species grouped into two distinct main clades, namely clade I and clade II. In clade I, the *Leymus* species formed a very well-supported into a small distinct groups (Ia) first. Specifically, *L. racemosus*, *L. salinus*, *L. secalinus* and *L. triticoides* were clustered closely. Otherwise, *L. chinensis* was closer related to *L. pseudoracemosus*. Similarly, *L. tianshanicus* was closer related to *L. arenarius*. Then, all the species of *Leymus* (NsXm genome) were together with the *Psathyrostachys juncea*, *Psa. huanshanica* and *Psa. fragilis* (Ns genome). The clade II was composed of 11 accessions left, of which have two subclades, *Elymus hystrix* was included in the first subclade (IIb) with *Pseudoroegneria strigosa*, *Pse. libanotica*, *Pse. stipifolia* and *Pse. spicata* (St genome). Meanwhile, *Hordeum bogdanii* (H genome) and *H. chilense* were separated into the second subclade (IIc).

#### 4. DISCUSSION

*Leymus* Hochst. (1848) is a large polyploid perennial genus of the tribe Triticeae [1]. The genus was distinguished as a separate genus with *L. arenarius* (L.) Hochst. as the type species by Hochstetter (1848). For the ploidy levels, ranging from tetraploid ( $2n=4x=28$ ) to dodecaploid ( $2n=12x=84$ ), are cytologically recognized among *Leymus* species [3,4,5,6]. Species in *Leymus* contains the Ns and Xm genomes, where the presence of the *Psathyrostachys* Ns genome in *Leymus* has been repeatedly substantiated on the basis of meiotic pairing in interspecific hybrids, DNA hybridization patterns and DNA sequence data [6,7,27,28]. However, which species of *Psathyrostachys* is the donor of the Ns genome has not been identified. Meanwhile, Sequence data from the chloroplast DNA (cpDNA) *trnL-trnF*, *trnH-psbA* and mitochondrial *coxII* regions suggest that species of *Psathyrostachys* served as the maternal genome donor during the divergence of *Leymus* [29,30,31] Similarly, based on *Acc1* and *DMC1* sequences, the results indicate that there may be multiple origins in the genus of *Leymus*, and different *Psathyrostachys* species are involved in the genus of *Leymus* polyploidization and chromosome doubling [6,28]. In this study, *Psathyrostachys juncea*, *Psa. huanshanica* and *Psa. fragilis* (Ns genome) clustered together into clade I with *Leymus* species, which further illustrates *Leymus* that contains Ns genome are more closely related to *Psathyrostachys*. Specifically, *L. multicaulis* was

closer related to *Psa. Huanshanica*. Thus, based on the SSR maker dendrogram that the Ns genome of *L. multicaulis* maybe came from *Psa. huanshanica*. But, geographically, *Psa. huanshanica* was only distributed in China, while *L. multicaulis* was located in Central Asia. However, *Leymus* species are distributed from the coastal areas of North Sea, Central Asia, and East Asia, extending to Alaska and the western areas of North America [3,4,6,7]. meanwhile *Psathyrostachys* species mainly distributed in dry, semi-dry and grasslands lands areas of Central Asia [2]. Therefore, *Leymus* species and *Psathyrostachys* species have a wideoverlap in areas, which provides the possibility for their genetic exchange.

The Xm genome is one of the important basic genome in the perennial Triticeae species. The wheat tribe has been widely collected and recorded many wild species, but Xm-genome diploids have not been identified. At present, the *Pseudoroegneria* (St) [32], *Thinopyrum* (E<sup>b</sup>) [3], *Psathyrostachys* (Ns) [21,32,33], *Lophopyrum* (E<sup>a</sup>) [34], *Agropyron* (P) [6,29] and *Eremopyrum* (F) [6,31] have been suggested as the donate for Xm genome. However, the RAPD data indicated the Xm genome of *Leymus* may have multiple origins, and the St, W and H genomes may have taken part in the formation of some *Leymus* species [10]. Moreover, Phylogenetic analysis of single-copy nuclear *DMC1* data suggests that the origin of the Xm genome of *Leymus* could differ among species [35]. The present study, showed that all *Leymus* species were grouped together high statistic support with three diploid *Psathyrostachys* species. Our results are in agreement with the data by Shiotan, Yang, Wang and Jensen [13,32], it suggested that the St genome and J genome did not participated in the origin of *Leymus*. Owing to no diploid species containing the Xm genome was found until now, the origin of the Xm genome in Triticeae remained a mystery. The Xm genome might originate or may be extinct. In conclusion, the genomic constitution of *Leymus* should remain as NsXm until the source of Xm is identified.

The SSR maker dendrogram showed distinguished and determined the intraspecific relationship of *Leymus* species accurately. In this study, the results are partly in accordance with previous studies in morphological characteristics and genome homology, which are based on meiotic pairing and intergeneric hybrids. Furtherly, in the present study showed that *L. racemosus* (Russia), *L. salinus* (North America),

*L. secalinus* (East Asia) and *L. triticoides* (North America) were clustered together. Our results are in agreement with the ITS date and RAPD analyze showed that a very high homology existed in genomes of *Leymus* species from North America and central Asia [8,11], which suggested that the central Asia *Leymus* species might be via the Bering land bridge, and spread to the North American and Eurasian. Furthermore, *L. tianshanicus* (Xinjiang, China) was closer related with *L. arenarius* (border between Xinjiang, China and Kazakhstan). Otherwise, *L. chinensis* (Inner Mongolia, China) was closely related to *L. pseudoracemosus* (Qinghai, China). Lastly it indicates that the genetic relationship and genetic distance of *Leymus* species are related to geographical distribution and environment.

## 5. CONCLUSION

The objective of the study is to investigate the Ns genome donor and elucidate the origins of the Xm genome of *Leymus* and evaluate the phylogenetic relationships among these species. In our study, *Psathyrostachys juncea*, *Psa. huanshanica* and *Psa. fragilis* (Ns genome) clustered together into clade I with *Leymus* species, which further illustrates *Leymus* that contains Ns genome are more closely related to *Psathyrostachys*. *St genome and J genome did not participated in the origin of Leymus*, and the genetic relationship and genetic distance of *Leymus* species are related to geographical distribution and environment.

## ACKNOWLEDGEMENTS

The author would like to express thanks to Sichuan Natural Science Foundation Youth Fund (2023NSFSC1134), Fundamental Research Funds for the Central Universities, Southwest Minzu University (No. ZYN2022019) and Southwest Minzu University Double World-Class Project (CX2023011) for funding this research.

## COMPETING INTERESTS

Authors have declared that no competing interests exist.

## REFERENCES

1. Yen Chi, Jun-Liang Yang, Bernard R. Baum. Synopsis of *Leymus* species (Triticeae:Poaceae)." Journal of

2. Systematics and Evolution. 2009;47(1):67-86.
2. Yen C, Yang JL. Biosystematics of Triticeae. Beijing:China Agricultural Press;2011.
3. Anamthawat-Jonsson K, Wenke T, Thorsson AT, Sveinsson S, Zakrzewski F, Schmidt T. Evolutionary diversification of satellite DNA sequences from *Leymus* (Poaceae:Triticeae). Genome. 2009; 52(4):381-90. DOI:https://dx.doi.org/10.1139/g09-013.
4. Sha, Li-Na, Xing Fan, Hai-Qin Zhang, Hou-Yang Kang, Yi Wang, Xiao-Li Wang, Xiao-Fang Yu, Yong-Hong Zhou. Phylogeny and molecular evolution of the *mdc1* gene in the polyploid genus *Leymus* (Triticeae:Poaceae) and its diploid relatives. Journal of Systematics and Evolution. 2016;54(3):250-63. DOI:https://dx.doi.org/10.1111/jse.12188.
5. Habora ME, Eltayeb AE, Tsujimoto H, Tanaka K. Identification of osmotic stress-responsive genes from *Leymus mollis*, a wild relative of wheat (*Triticum aestivum* L.)." Breed Sci. 2012;62(1):78-86. DOI:https://dx.doi.org/10.1270/jsbbs.62.78.
6. Fan X, Sha LN, Yang RW, Zhang HQ, Kang HY, Ding CB, et al. Phylogeny and evolutionary history of *Leymus* (Triticeae;Poaceae) based on a single-copy nuclear gene encoding plastid acetyl-CoA carboxylase. BMC Evolutionary Biology. 2009;9:247-252. DOI:10.1186/1471-2148-9-247
7. Sha LN, Fan X, Li J, Liao JQ, Zeng J, Wang Y, et al. Contrasting evolutionary patterns of multiple loci uncover new aspects in the genome origin and evolutionary history of *Leymus* (Triticeae; Poaceae). Molecular Phylogenetics and Evolution. 2017;114:175-188. DOI:10.1016/j.ympev.2017.05.015
8. Tzvelev NN. Zlaki SSSR (Poaceae URSS.). Nauka, Leningrad; 1976.
9. Yang RW, Zhou YH, Ding CB, Zheng YL, Zhang L. Relationships among *Leymus* species assessed by RAPD markers. Biologia Plantarum. 2008;52:237-241. DOI:10.1007/s10535-008-0052-1
10. Yang RW, Zhong MH, Zou XM, Ding CB, Zhang L, Zhou YH. Phylogenetic relationships between *Leymus* (Poaceae, Triticeae) and related diploid Triticeae species based on isozyme and genome-specific random amplified polymorphic



- DNA (RAPD) markers. *Plant Biosystems*. 2012;146:84–91.
11. Wang RRC. Agropyron and psathyrostachys. In:Kole C. eds. *Wild crop relatives:Genomic and breeding resources, cereals*. Berlin: Springer-Verlag. 2011;77–108.
  12. Sha L.N, Yang R.W, Fan X, Wang X.L, Zhou Y.H. Phylogenetic analysis of *Leymus* (Poaceae:Triticeae) inferred from nuclear rDNA ITS sequences. *Biochemical Genetics*. 2008;46:605–619. DOI:10.1007/s10528-008-9175-5
  13. Wang RRC, Jensen KB. Absence of the J genome in *Leymus* species (Poaceae:Triticeae):evidence from DNA hybridization and meiotic pairing. *Genome*. 1994;37:231-235.
  14. Guo GY, Yang RW, Ding CB, Fan X, Zhang L, Zhou YH. Phylogenetic relationships between *Leymus* and related diploid Triticeae species revealed by ISSR markers. *Biologia*. 2014;69/8:986-993. DOI:10.2478/s11756-014-0395-3
  15. Kim, Tae-Won, Joon-Chul Kim, George Fedak, Jae-Han Son, Kyong-Cheul Park, Nam-Soo Kim. Sequence variation in its spacers and 5.8s Rdna and Relationship of E, St, P, Ns, Xm, and H Genomes in the Genera of Agropyron, Elytrigia, Leymus, Pascopyrum, Psathyrostachys, and Hordeum. *Genes & Genomics*. 2010; 32(5):477-85. DOI:https://dx.doi.org/10.1007/s13258-010-0050-5
  16. Zhou, Xincheng, Xinming Yang, Xiuquan Li, Lihui Li. Genome origins in leymus (Poaceae: Triticeae):Evidence of maternal and paternal progenitors and implications for reticulate evolution. *Plant Systematics and Evolution* 289, no. 3-4;2010;65-79. DOI:https://dx.doi.org/10.1007/s00606-010-0341-y.
  17. Anamthawat-JÓNsson, Kesara. Molecular cytogenetics ofleymus: mapping the ns genome-specific repetitive sequences. *Journal of Systematics and Evolution*. 2014;52(6):716-21. DOI:https://dx.doi.org/10.1111/jse.12106.
  18. Melderis A. *Leymus*. In:Tutin T.G., Heywood VH, Burges N.A, Moore D.M., Valentin D.H., Walters SM, Webb D.A. eds. *Flora Europaea*. Cambridge: Cambridge University Press. 1980;5:190–192.
  19. Estes J.R, Tyrl R.J. The generic concept and generic circumscription in the Triticeae: An end paper. In: Estes J.R. Tyrl R.J., Brunken J.N. eds. *Grasses and grasslands*. Norman: University of Oklahoma Press. 1982;145–164.
  20. Yen C, Yang JL, Baum BR. Synopsis of *Leymus* Hochst. (Triticeae:Poaceae). *Journal of Systematics and Evolution*. 2009;47:67–86. DOI:10.1111/j.1759-6831.2009.00004.x
  21. Aparajita S, Rout GR. Genetic differentiation of Albizialebbeck (L.) Benth. Populations estimated by RAPD and ISSR markers. *Plant Biosyst* 2009;143:361–368.
  22. Zhang HQ, Zhou YH. Genetic relationships among *Hystrixpatula*, *H. duthiei* and *H. longearistata* according to meioticstudies and genome-specific RAPD assay. *Biol Plantarum*. 2009;53:45–52.
  23. Che YH, Yang YP, Yang XM, Li XQ, Li LH. Phylogenetic relationship and diversity among Agropyron Gaertn. germplasm using SSRs markers. *Plant Systematics and Evolution*. 2015;301:163–170. DOI:10.1007/s00606-014-1062-4
  24. Xiong Y, Liu W, Xiong Y, Yu Q, Ma X, Lei X, et al. Revelation of genetic diversity and structure of wild *Elymus excelsus* (Poaceae:Triticeae) collection from western China by SSR markers. *PeerJ*. 2019;7:14. DOI:10.7717/peerj.8038
  25. Zhao L, Ding Q, Zeng J, Wang FR, Zhang J, Fan SJ, He XQ. An improved ctammonium acetate method for total rna isolation from cotton. *Phytochem Anal*. 2012;647-50. DOI:https://dx.doi.org/10.1002/pca.2368.
  26. Rohlf FJ. NTSYS-pc :Numerical taxonomy and multivariate analysis system, Version 2.0. New York:Exter Software; 1994.
  27. Dewey DR. The genome constitution and phylogeny of *Elymus ambiguous*. *American Journal of Botany*. 1976;63:626–634.
  28. Zhang HB, Dvorak J. The genome origin of tetraploid of *Leymus* (Poaceae:Triticeae) inferred from variation in repeated nucleotide sequences. *American Journal of Botany*. 1991;78:871-884.
  29. Sha LN, Fan X, Yang RW, Kang HY, Ding CB, Zhang L, et al. Phylogenetic relationships between *Hystrix* and its closely related genera (Poaceae: Triticeae) based on nuclear Acc1, DMC1 and chloroplast trnL-F sequences. *Molecular*

- Phylogenetics and Evolution. 2010;54:327-335.
30. Liu ZP, Chen ZY, Pan J, Li XF, Su M, Wang LJ, et al. Phylogenetic relationships in *Leymus* (Poaceae:Triticeae) revealed by nuclear ribosomal internal transcribed spacer and chloroplast trnL-F sequences. *Molecular Phylogenetics and Evolution*. 2008;46:278-289.
  31. Sha LN, Fan X, Zhang HQ, Kang HY, Wang Y, Wang XL, et al. Phylogenetic relationships in *Leymus* (Triticeae; Poaceae): evidence from chloroplast trnH-psbA and mitochondrial coxII intron sequences. *J. Syst. Evol.* 2014;52:722–734.
  32. Yu, Haiqing, Chun Zhang, Chunbang Ding, Xiaoli Wang, Haiqin Zhang, Yonghong Zhou. Genome constitutions of *pseudoroegneria geniculata*, *P. Genticulata* Ssp. *Scythica* and *P. Genticulata* Ssp. *Pruinifera* (Poaceae:Triticeae) revealed by genomic in situ hybridization. *Acta Physiologiae Plantarum*. 2010;645-50. DOI:<https://dx.doi.org/10.1007/s11738-009-0441-x>.
  33. Anamthawat-Jónsson K, Bödvarsdóttir S.K. Genomic and genetic relationships among species of *Leymus* (Poaceae:Triticeae) inferred from 18S- 26S ribosomal genes. *Am. J. Bot.* 2001;88:553–559.
  34. Sun G.L, Wu BH, Liu F. Cytogenetic and genomic relationships of *Thinopyrum elongatum* with two *Psathyrostachys* species and with *Leymus secalinus* Poaceae. *Plant Systematics and Evolution*. 1995;197:225-231.
  35. Sha LN, Fan X, Zhang HQ, Kang KY, Wang Y, et al. Phylogeny and molecular evolution of the DMC1 gene in the polyploid genus *Leymus* (Triticeae:Poaceae) and its diploid relatives. *J. Syst. Evol.* 2016;5:250–263.

© 2023 Zhang et al.; This is an Open Access article distributed under the terms of the Creative Commons Attribution License (<http://creativecommons.org/licenses/by/4.0>), which permits unrestricted use, distribution, and reproduction in any medium, provided the original work is properly cited.

Peer-review history:

The peer review history for this paper can be accessed here:

<https://www.sdiarticle5.com/review-history/99196>