

Application of Benford's Law to Hydrogeological Parameters: Case of the Baya Watershed (Eastern Côte d'Ivoire)

M. J. Mangoua^{1*}, K. A. Kouassi², G. A. Douagui², I. Savané² and J. Biémi³

¹*UFR Environment, Laboratory of Environmental Sciences and Technologies, Jean Lorougnon Guedé Daloa University, BP 150 Daloa, Côte d'Ivoire.*

²*UFR Sciences and Environmental Management (SGE), Geosciences and Environment Laboratory, Nangui Abrogoua University, 02 BP 801 Abidjan 02, Côte d'Ivoire.*

³*UFR Sciences of Earth and Mining Resources (STRM), Laboratory of Water and Environmental Sciences and Techniques, Félix Houphouët Boigny University, 22 BP 582 Abidjan 22, Côte d'Ivoire.*

Authors' contributions

This work was carried out in collaboration among all authors. Author MJM designed the study, performed the statistical analysis, wrote the protocol and wrote the first draft of the manuscript. Authors KAK and GAD managed the analyses of the study. Author IS and JB managed the literature searches. All authors read and approved the final manuscript.

Article Information

Editor(s):

(1) Dr. Adewumi, Adeniyi JohnPaul, Lecturer II, Department of Geological Sciences, Achievers University, Owo, Nigeria.

Reviewers:

(1) Carlos Alberto Ferreira Lagarinhos, Polytechnic School of the University of São Paulo, Brazil.

(2) Mohamed El Baghdadi, University Sultan Moulay Slimane, Morocco.

Complete Peer review History: <http://www.sdiarticle4.com/review-history/51689>

Original Research Article

Received 14 July 2019
Accepted 27 September 2019
Published 03 October 2019

ABSTRACT

The Baya watershed is located in the eastern region of Côte d'Ivoire. It covers up a total area of 6324.041 sq. km. The exploited resources in water in that basin are surface waters and groundwaters through different drillings. The thrust of this study is to scrutinize the hydrodynamic parameters that could be influenced during drilling operation productivity in the basin through Benford statistical law. The sample is 150 drillings. This work is also the comparison of frequencies curves for parameters with regards to the empirical curve of Benford and carries out an appropriate test to see if our parameters are in line with Benford's law. The Findings obtained state that transmissivity (T) and flow (F) depend only on the natural environment. Consequently, they cannot be influenced and/or predict their values as opposed to the static level (SL), the alteration thickness (AT) and to the total depth (TD) that are not in line with that law.

*Corresponding author: Email: jules_mangoua@ujlg.edu.ci; mjul_2@yahoo.fr;

Keywords: Benford; chi-square; baya watershed.

1. INTRODUCTION

Groundwaters represent 1/3, which is about 31.1% of fresh water resources of the world. It is the second reservoir of fresh waters after the glaciers and the polar cap [1]. Ground waters are contained in the aquifers and sometimes have the benefit of being protected from seasonal changes, possible and occasional accidents from pollution [2-6]. The mastery of aquifers hydrodynamic behavior containing those waters is very important for provision of drinking water for population. In this framework, various researches [7-9] have been conducted in Côte d'Ivoire about those aquifers, mainly on the Baya watershed [10] with an estimated population size of 478,327 people [11]. The work of [10] made use of various data from different hydrodynamic parameters. Those data are to be taken with care as land measurements are sometimes likely to constraints or do not seem to be done with due care and tend to be estimated, which could influence our findings. To better appreciate the drillings' productivity, the parameters used are those that will be free from any influences. Then, what would the uninfluenced parameters that will better explain hydrodynamic behavior of aquifers in the Baya watershed be? This question will bring us highlight the uninfluenced parameter using Benford's statistical law which has been used in various researches [12], namely in hydrogeology.

2. MATERIALS AND METHODS

2.1 Study Area

Baya watershed is located in the eastern region of Côte d'Ivoire between the longitudes 2°38' et 3°33' W and the latitudes 6°35' et 8°26' N. It covers a total area of about 6,324 square km (Fig. 1). The population size of the basin about 478,327 people with a rise of 2.8% of the population [11]. In terms of pedology, this basin is covered up with water table used for crops and commercial ones (coffee, cacao, cashier nut) and food crops [13]. The main geological formations can be grouped in three big lithological groups [14]. A group of tarkwaien, then volcano-sedimentary complex is mainly composed of schist, Amphibolite and of Metadolerite and an intrusive rock complex. From the hydrogeologic level, we can identify two types of aquifers within the study area. They are alteration aquifers and cracked (fissured) ones. The former is the

reservoirs from physico-chemical alteration processes and from the erosion of the basement. They are composed of clayey sand and coarse-grained and they represent the first level of reservoir in the board. Those aquifers are directly operated with rainfalls. The latter are to be found in areas and/or damaged of the board. Thus, their water capacity is in relation to the density of the fracture of the board [15,16].

2.2 Material

For the purpose of this current study, we used technical data from 150 drillings (Flow (F), transmissivity (T), alteration thickness (AT), static level (SL), total depth (TD) from territorial offices for village hydraulic devices in Abengourou and Bondoukou.

2.3 Methodological Approach

Benford's law is used to highlight differences for our data about drilling in connection with seismic methods used for geological structures for sub-soil. Therefore, we will draw the curve of each parameter studied according to Benford's with reference to the ensuing equation:

$f = \log(1 + \frac{1}{d})$ and then interpret them still referring to the ideal modeling of Benford (Fig. 2). That law will be applied for the transmissivity (T), Flow (F), total depth (TD), static level (SL) and to alteration thickness (AT). Data extraction was made using Excel software package. It consists in selecting the first figures, which are not null more on the left for drilling data. Thus, we were able to group the number of digits from 1 to 9 for each parameter, then calculate their frequency of occurrence and compare them to the empirical pace of the Benford curve (Fig. 2). After that, to better appreciate if the five parameters are in line with Benford's law, the statistical test Chi-square which is an appropriate test for Benford's law, was applied to these parameters.

2.4 Chi-square Test (Adequate Test for Benford's law)

Chi-square test (χ^2) is a statistical test to determine if the difference between two distributions of frequencies is due to sampling error (random) or is sufficiently important to be statistically significant. Chi-square calculated statistic ($\chi^2_{obs.}$) is compared with the threshold

value χ^2 read on the table of χ^2 for 8 degrees of freedom in Benford's law case and for an error risk α of 10%.

- $\chi^2_{obs} < \chi^2$ threshold, the hypothesis H_0 (the parameter (X) follows Benford's law) cannot be rejected. The distribution of theoretical sizes and observed are not significantly different;

- $\chi^2_{obs} > \chi^2$ threshold, the hypothesis H_0 is rejected to the significance threshold $\alpha = 10\%$ and the hypothesis H_1 (the parameter (X) does not follow Benford's law) is accepted. In this study, chi-square test (χ^2) help us assert if the

parameters (T), (F), (TD), (SL) and (AT)) follow Benford's law (null hypothesis H_0) or not. The chi-square test is calculated through the following formula (Eq. 1) :

$$\frac{(o_1 - e_1)^2}{e_1} + \frac{(o_2 - e_2)^2}{e_2} + \dots + \frac{(o_p - e_p)^2}{e_p} = \sum \frac{(o_i - e_i)^2}{e_i} \quad \text{Eq. 1}$$

With

O_i = size observed
 e_i = theoretical size

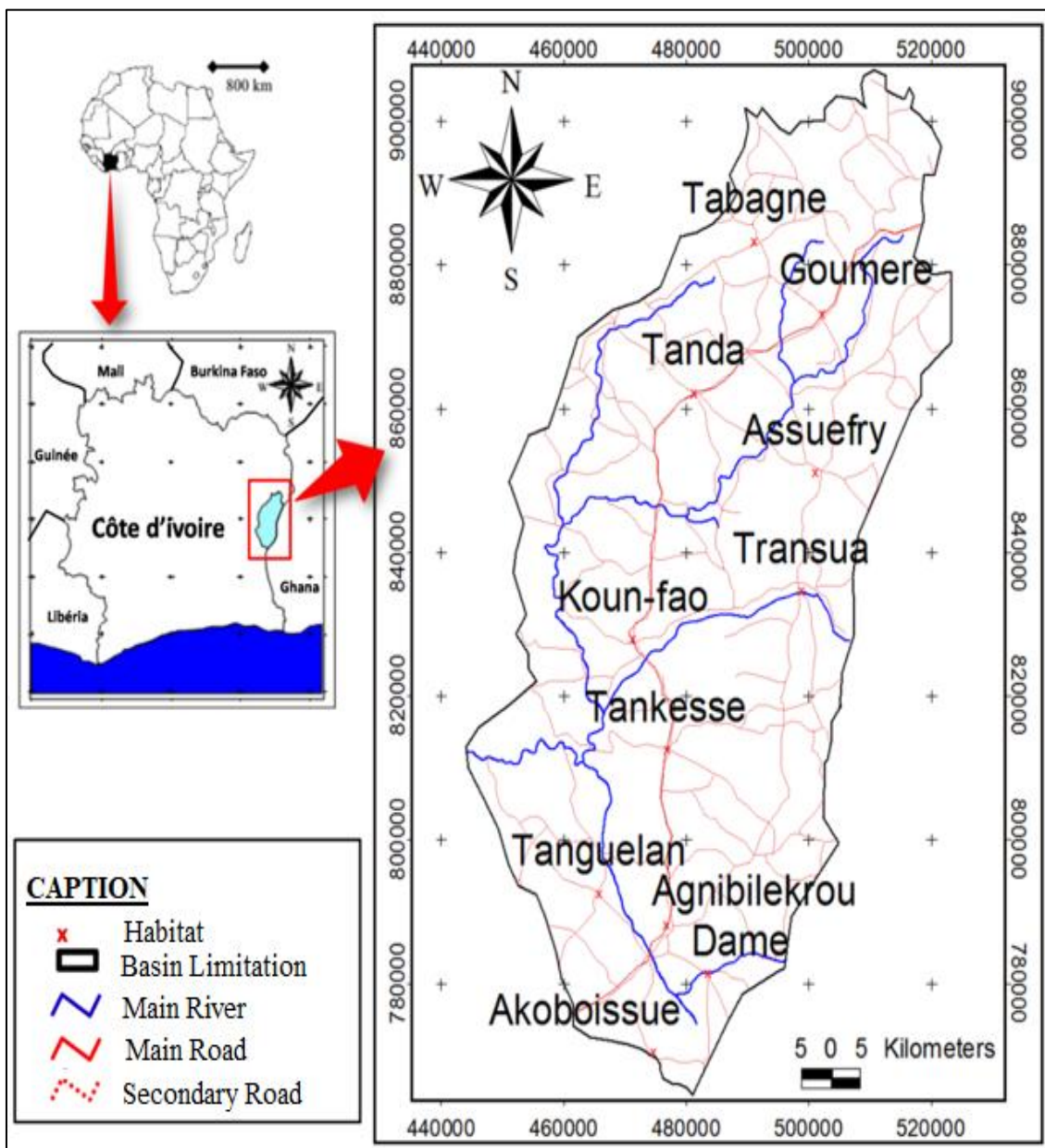


Fig. 1. Map of the study area

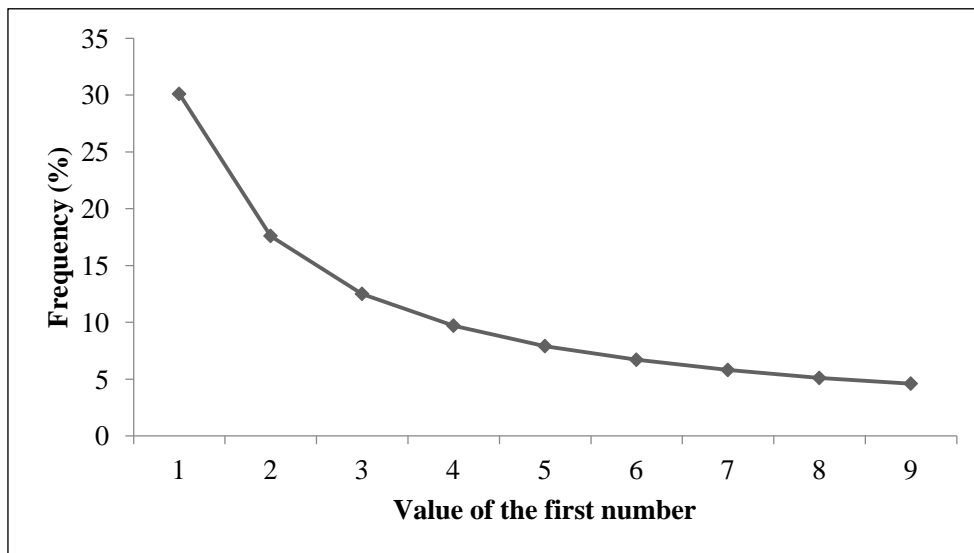


Fig. 2. Fractal parabolic distribution of Benford's law

3. FINDINGS AND DISCUSSION

3.1 Findings

The different values for the size and frequencies obtained thanks to numbering are presented in the Table1.

Fig. 3 represents frequencies curves for transmissivity (T) values, flow (F), static level (SL), total depth (TD), and alteration thickness (AT) with regards to the values of the first number from Benford's law.

The direction of the total curve depth (Fig. 3D) and the alteration thickness (Fig. 3E) are much contrasted and do not coincide with the ideal curve of Benford (curve in blue). For transmissivity (Fig. 3A), flow (Fig. 3B) and the static level (Fig. 3C), the lines represent parabolic orientations which are less in line with

Benford's curve. To better appreciate if those parameters are in line with Benford's law, we made use of chi-square statistics.

3.2 Adequate Test for Benford's Law: Chi-Square

The chi-square values (χ^2) of each parameter are highlighted in Table 2. The degree of freedom is 8. The significance threshold is $\alpha = 10\%$, the chi-square value threshold ($\chi^2_{\text{threshold}}$ or $\chi^2_{0.9}$) in the table of χ^2 is 13.36 for 8 degree of freedom. The adjustment test of chi-square to Benford's law is positive for transmissivity (T) and flow (F) and negative for static level (SL) alteration thickness (AT) and total depth (TD) to the acceptance threshold level of 10%. These results made possible the acceptance of the hypothesis H_0 pour T and F and the rejection of Benford's law for the parameters AT, SL and TD (Table 2).

Table 1. Results for different parameters with regards to Benford's law

D	Fb		T		F		SL		TD		AT	
	Freq.	Size	Freq.	Size	Freq.	Size	Freq.	Size	Freq.	Size	Freq.	Size
1	30.1	46	32	44	29.33	53	35.33	4	2.66	17	11.33	
2	17.6	30	21	23	15.33	34	22.66	0	0	26	17.33	
3	12.5	21	14	14	9.33	23	15.33	0	0	24	16	
4	9.7	11	8	15	10	22	14.66	8	5.33	35	23	
5	7.9	13	8	17	11	7	4.66	25	16.66	18	12	
6	6.7	6	4	13	8.66	5	3.33	41	27.33	19	12.66	
7	5.8	11	7	13	8.66	2	1.33	37	24.66	5	3.33	
8	5.1	8	5	6	4	1	0.66	21	14	4	2.66	
9	4.6	2	1	5	3.33	3	2	14	9.33	2	1.33	

Fb: Benford's law; D: Figure

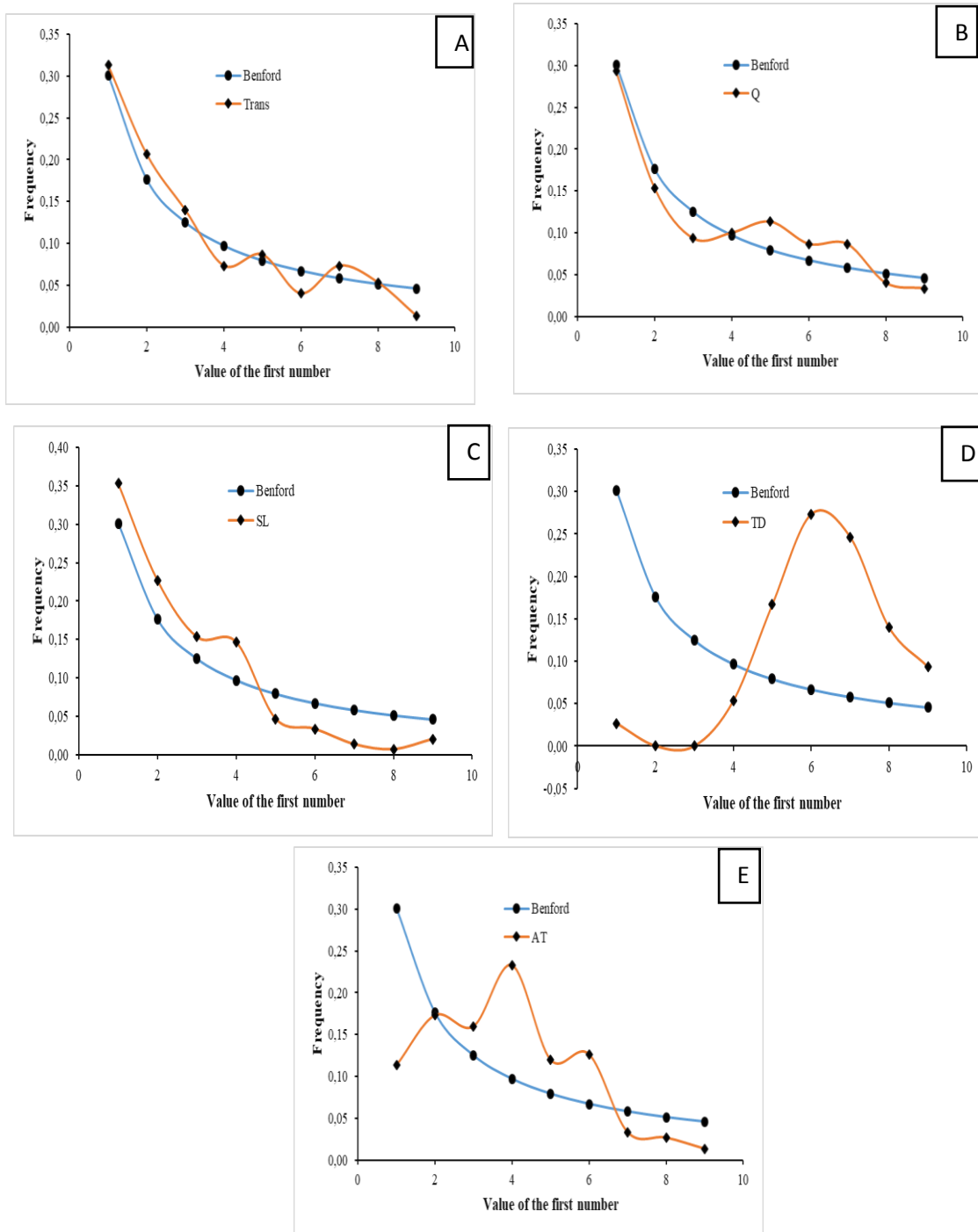


Fig. 3. Comparison of curves direction from different parameters from Benford's
A)Transmissivity; B) flow; C) static level; D) depth and E) alteration thickness

Table 2. Summary of findings of chi-square for different parameters

	T	F	SL	AT	TD
$\bar{\sigma}_{obs}^2$	5.41	4.91	17.34	42.90	212.04
$\bar{\sigma}^2$	13.36	13.36	13.36	13.36	13.36
H_0	Accepted	Accepted	Rejected	Rejected	Rejected

3.3 Discussion

The parameters T and F are in line with Benford's law as they dependent on natural conditions of environment only [17]. As for the static level, it changes much with season, closeness to a well, a pump and even to a river as they sometimes impact water level in drilling. Measurement on ground is made when population takes water in the drilling. It could explain that inadequate situation to Benford's law. Total depth and alteration thicknesses are not in line with Benford's law in so far as they undergo financial constraints, limitations for drilling not to be crossed and/or for the appreciation of the technician during the work. On Baya watershed, TD (total depth) varies from 42.7 to 110.53 m. Therefore, it will be hard to get the first significant figures « 1 », « 2 » and « 3 ». For AT (alteration thickness), 76% of drilling have thickness sizes that vary between 25 and 70 m and 50 % that vary between 40 and 70 m. that is why, the parameters TD, SL and AT are not in line with Benford's law even if their data are spread and are regular as indicated by [12,18]. In other words, if there is no adequate situation with Benford's law, this does give any doubt about the credibility of our data. Types of hydrogeologic data in line with Benford's law must be known as posited by [19,20] for accountancy and purchasing materials. The application of Benford's law in hydrogeology helps us identify those parameters, those on which we can interact (AT, SL and TD) and the ones (F and T) on which no one can predict or foresee the value when installing a drilling.

4. CONCLUSION

The study of the hydrodynamic parameters influencing drilling productivity of the Baya watershed using Benford's law reveals that:

The parameters of transmissivity (T) and flow (F) are in line with Benford's law as they are uniquely dependent upon the natural environment. The results of our findings have been consistent with adequate test for chi-square which was positive;

The static level (SL) parameters, total depth (TD) and alliterate thickness (AT) do not follow Benford's law: SL is dependent upon seasonal and anthropic factors; TD and AT undergo constraints from various orders. The adequate test showed that Benford's law could not be used

for those parameters, which brought us to draw early conclusion.

COMPETING INTERESTS

Authors have declared that no competing interests exist.

REFERENCES

1. Banton O, Bangoy LM. Hydrogeology. environmental multiscience of groundwater. Presses of the University of Quebec., AUPELF-UREF. 1997;460.
2. Jourda JRP. Methodology of application of remote sensing techniques and geographical information systems to the study of cracked aquifers of West Africa. Concept of space hydrotechnics: Case of the test areas of Côte d'Ivoire. PhD thesis of Natural Sciences. University of Cocody, Abidjan (Ivory Coast). 2005;430.
3. Kouadio EK, Savane I, Lasm T, Biemi J. Hydrogeology prospecting in crystalline and metamorphic area by spatial analysis of productivity potential. European Journal of Scientific Research. 2008;22(3):373-390.
4. Niamke KH, Saley MB, N'dri BE, Ouattara A, BIÉMI J. Contribution to the interpretation of lineaments by the exploitation of Pseudo Images, Hydrography in Wet Tropic Region: Case of N'zi-Comoe (Central Ivory Coast). European Journal of Scientific Research. 2008;24(1):74-93.
5. Youan Ta M, Lasm T, Jourda JP, Kouame KF, Razack M. Structural mapping with landsat-7 etm + satellite imagery and analysis of fracture networks of the precambrian basement of the bondoukou region (North-East Côte d'Ivoire). Remote Sensing Review. 2008;8(2):119-135.
6. N'go YA, Lasm T, Koita M, Savane I, Remote sensing extraction of major fracture networks of the precambrian basement of the Dimbokro region (East-Central Côte d'Ivoire). Remote Sensing Review. 2010;9(1):33-42.
7. Ahoussi KE, Amani MK, Gbombele S, Nagnin S, Jean B. Hydrodynamic functioning of discontinuous aquifers in the Abidjan-Agboville region (southern Côte d'Ivoire). International Journal of Geography and Geology. 2013;2(5):52-69.

8. Amani KM, Coulibaly D, Koffi YB, Biemi J. Application of geophysical methods to the study of the productivity of water drilling in a crystalline environment: Case of the Toumodi region (Central Côte d'Ivoire), International Journal of Innovation and Applied Studies. 2013;324-334.
9. Baka D, Lasm T, Oga1 MS, Youan TM, Lasme O, Kouakou SO, Ettien FB Characterization of transmissivity in the fractured reservoirs in the Oumé area (Central Ivory Coast), American Journal of Scientific and Industrial Research. 2011;2(2):310-322.
10. Mangoua MJ. Evaluation of potentialities and vulnerability of groundwater resources in aquifers fissures of the baya watershed (east of the Ivory Coast) PhD thesis in Hydrogeology, NANGUI ABROGOUA University, Abidjan (Côte d'Ivoire) 'Ivory). 2013;171.
11. INS (National Institute of Statistics). General census of the population and the habitat of Ivory coast. Summary report, volume of the monographic files of the localities: Zanzan region and Moyen-comoé. INS Abidjan; 2014.
12. Gauvrit N, Delahaye JP. General Benford Act. Mathematics and Human Sciences. 2009;186:5-15.
13. Yves S, Delor C, Zeade Z, Kone Y, Yao BD, Vidal M, Diaby I, Konan G, Irié DB, N'da D, Dommanget A, Cautru JP, Guerrot C, Chiron JC. Geological map of Ivory Coast at 1/200 000; AGNIBILEKROU sheet. Brief of the Directorate of Mines and Geology, No. 8, Abidjan, Côte d'Ivoire. 1995;19.
14. Youan Ta M, Lasme OD, Baka D, Lasm T, Jourda PJ, Biemi J. Analysis of the hydrodynamic properties of the fissured aquifer of the Paleoproterozoic basement: Help with the drinking water supply of the populations of the Bondoukou region (north-eastern Côte d'Ivoire). International Journal of Innovation and Applied Studies. 2015;13:563-564.
15. Sawadogo AN. Geology and hydrogeology of the crystalline basement of Upper Volta: regional study of the watershed of Ima Sissili. PhD thesis in Natural Sciences, University of Grenoble (France). 1984;350.
16. Biemi J. Contribution to the geological, hydrogeological and remote sensing study of sub-Saharan basins of the Precambrian basement of West Africa: Hydrostructural, hydrodynamic and isotopy of discontinuous aquifers of furrows and granitic areas of the Marahoué (Ivory Coast). PhD thesis in Natural Sciences, University of Cocody, Abidjan (Ivory Coast). 1992;479.
17. Nigrini JM, Miller JS. Benford's law applied to hydrology data: Results and relevance to other geophysical data. Mathematical Geology. 2007;39:469-490.
18. Gauvrit N, Delahaye JP. Why the law of benford is not mysterious. Mathematics and Human Sciences. 2008;182:7-15.
19. Labouze X, Labouze R, Benford's law: Detecting accounting fraud. French Journal of Accounting. 2000;2:321.
20. Bonache A, Maurice J, Moris K. Fraud detection and benford's law: some associated risks. French Review of Accounting. 2010;431:2-5.

© 2019 Mangoua et al.; This is an Open Access article distributed under the terms of the Creative Commons Attribution License (<http://creativecommons.org/licenses/by/4.0>), which permits unrestricted use, distribution, and reproduction in any medium, provided the original work is properly cited.

Peer-review history:

The peer review history for this paper can be accessed here:
<http://www.sdiarticle4.com/review-history/51689>